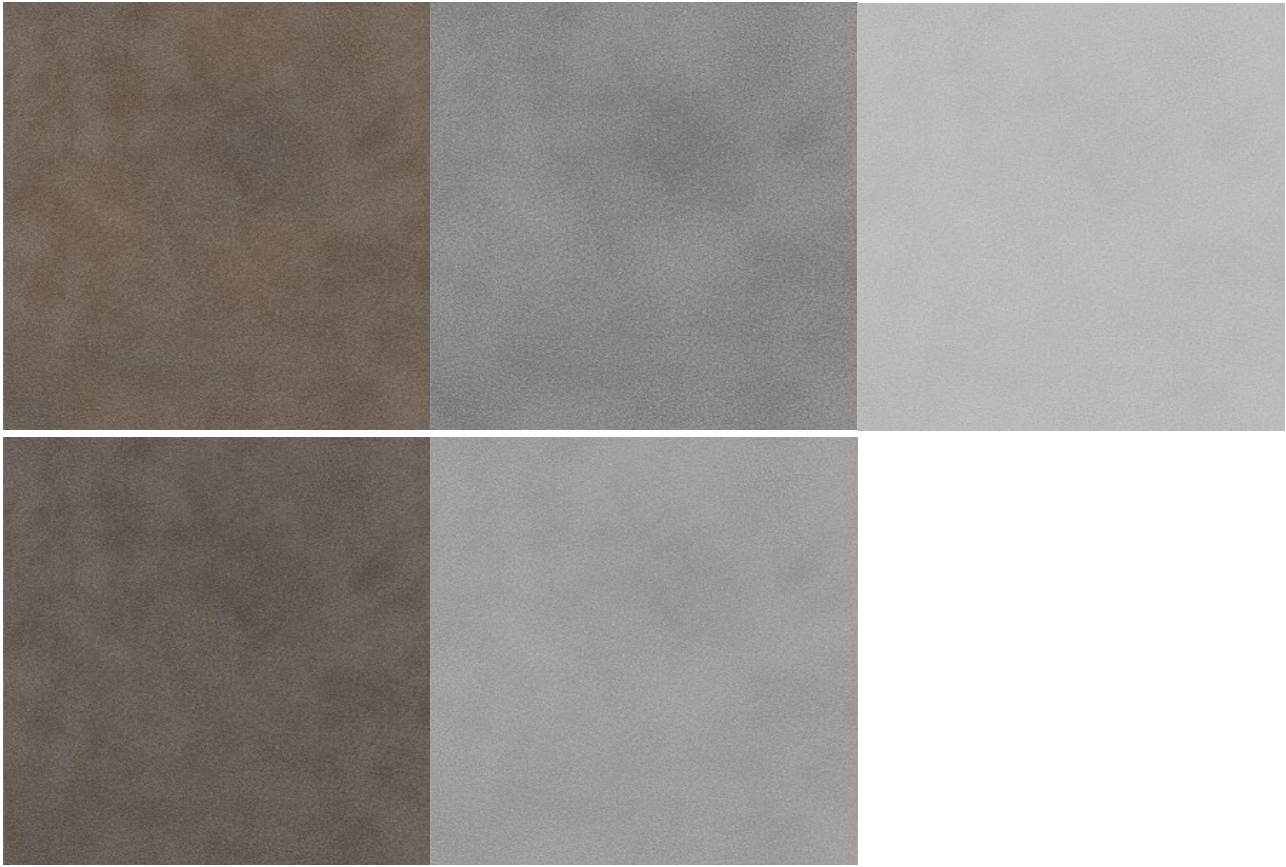


---

## Fancy Leather M9069



### Company Profile

Business Type: Manufacturer/Factory/Supplier/Exporter

Main Products: Printed decor paper/Melamine impregnated paper

Number of Employees: 65

Year of Establishment: 2015-01-04

Location: Lin An, Hangzhou, China(Mainland)

Basic Info(for Printed decor paper)

### Basic Info(for Printed decor paper)

Code No.: M9069

Width: 1250mm

Grammage: 70/80GSM

---

Raw Base Paper: Top two quality manufacturers in China

Printing Ink: Water-based ink (non-toxic) from Taiwan

Trademark: FEEMO

Usage: after melamine impregnation, used for HPL and all kinds of wood based panel lamination

Origin: Lin An, China

## Specification of decors(for Printed decor paper)

Grammage: 70/80±3GSM

Ash Content:28-32%

Smoothness: 200±20S

Porosity:  $\leq 20$  S/100ml

PH Value: 6.5±0.30

Wet Tensile Strength:  $\geq 6$

Dry Tensile Strength:  $\geq 23$

Color Fastness:  $\geq 6$  Grade

Moisture Content:  $\leq 4.2\%$

## Process Steps (for Printed decor paper)

Raw base paper selection → Master color records → Color Matching → Trial Production → Color Re-confirmation → Formal production → Color final confirmation → Rewinding & Defects Inspection → Packing into finished decors

## Applications

After melamine impregnation, used for HPL, and all kinds of wood based panel lamination such as MDF board, HDF board, Particle board/Chipboard, Plywood,etc. Decor paper is used for top surface of furniture panel, laminate floor, and wall panels, for interior decoration.

## Main Export Market

China, South Korea, Indonesia, Vietnam, Malaysia, India, Bangladesh,Dubai, Saudi Arabia, Turkey, Kenya, USA, Mexico, etc

---

## Package & Shipment (for Printed decor paper)

FOB Seaport: Shanghai, China

Package: About 500KGS each roll

LCL shipment: Pallet packing

FCL shipment: Rolls packing

20' GP FCL: about 16,000KGS

40' GP FCL: about 25,000KGS

## Payment & Delivery

Payment: Advance T/T, T/T, L/C at sight

Delivery Details: within 10 working days after order confirmation

## Primary Competitive Advantages

Quality raw materials selected, focused on premium quality only

Strict color variation control under records management system

Skilled experts in production for operation and printing

Perfect after-sale service

More new development with R & D department

Small trial orders are accepted, free samples available

OEM and customized colors/designs available

Product link : <https://www.fimodecor.com/fancy-leather-m9065.html>